

# Sailing Point Record 2010

## Rules

---

### 1. ORGANISER

---

Record is organised by the shop Sailing Point (SEAWAY TIM d.o.o.) in cooperation with JK Olimpic.

tel: + 386 5 677-81-25

fax: + 386 5 677-81-26

web: [www.sailing-point.si](http://www.sailing-point.si) and [www.sailingrecord.com](http://www.sailingrecord.com)

Bank account number: IBAN SI56 1010 0001 1644 457

Name of the bank: Banka Koper

Purpose of payment: (sailing boat name) Record Hunters Club

### 2. Date

---

Record means the shortest time sailing boat needs to sail the course defined in Paragraph 8. The record may be set any time within one-year period. The sailing boat must cross the finish line before 1 January, 2011.

### 3. Rules

---

- Slovene maritime law
- International Regulation for Preventing Collisions at Sea
- It is recommended that sailing boats comply with ISAF Offshore Special Regulations (ORC) Category 3 Monohulls <http://www.sailing.org/specialregulations.php>
- Sailing boats over 26ft are allowed to set the record. The Organiser may make an exception and allow a smaller sailing boat to participate.

### 4. Class

---

All sailing boats are classified in one class. The boat length and type will be indicated along with the times. Number of crew is unlimited.

### 5. Mandatory equipment

---

Slovenian maritime law applies for mandatory equipment. (Pravilnik o čolnih in plavajočih napravah Ur.l. RS, št. 45/2002 - Rules on Boats and Floating Objects – Official Gazette of the RS no. 45/2002).

## 6. Registration

---

Each sailing boat must announce (by telephone or email) the time of its start to the organiser at least 24 hours in advance of the intended starting time. The skipper must send the filled in first part of the form (Attachment 2) and at first attempt the evidence of registration fee payment. Any sailing boat must start within a 24-hour starting window from the announced intended starting time.

Upon registration it is possible to get weather information from the organiser acquired from the Environmental Agency of the Republic of Slovenia's ALADIN model.

## 7. Registration fee

---

Registration fee is EUR 50 payable at the first attempt only. All other attempts in the season are free of charge.

**Attempts until 1.9.2010. are for free.**

## 8. Course

---

The starting line represents an imaginary line of the 13°34.00'E meridian, North East from the Madona cape (cape of Piran). Red and with lighthouse {B Bl (1) 10s 7m 6MN} spherical shape located at 45°23.945'N and 12°28.821'E in front of Venice must be left from any side. The finish line is represented by the same imaginary line of the 13°34.00'E meridian, North East from the Madona cape (cape of Piran). Course is 93 nm long.

See Attachment 1.

## 9. Check points

---

For a record attempt to be valid, a sailing boat must clearly indicate the starting time, time of rounding the lighthouse in front of Venice and the time of crossing the finish line.

The whole route must be tracked with a GPS device, with a density of tracked points of at least one each 0.5 nm. The track must be sent in digital format along with the filled in form (Attachment 2) at least 24 hours after crossing the finish line. The track and form can be sent by email.

A record attempt will be valid only if the sailing boat fulfils the obligations set out in this paragraph.

## 10. Tracking

---

Sailing boats can borrow a GPS tracking device (Velocitek) from the organizer. The device can be picked up in Sailing Point store – it is recommended to announce this need in advance.

## 11. Communication

---

Communication during the attempt with the organiser can exclusively be by cell-phone. A sailing boat must have at least two cell-phones numbers available at any time during the attempt, at which it can be reached by the organiser. During sailing it is recommended that the sailing boat sends every 2 hours, depending on the mobile signal, an SMS specifying its position, boat speed, wind speed, sailing time and all other information that would be interesting for the internet publication. All forms of external information and communication assistance are allowed.

## 12. Engine

---

During a record attempt the sailing boat is not allowed to use any propulsion means (engine, peddles, etc.) other than wind.

## 13. Prizes

---

Practical prizes will be supplied for the fastest racers by Sailing Point store and will be specified later.

## 14. DISCLAIMER OF LIABILITY

---

Competitors participate in the regatta entirely at their own risk. The organiser will not accept any liability for material damage or personal injury or death sustained in conjunction with or prior to, during, or after the record attempt.

All sailing boats and crews decide to participate in this contest on exclusively individual and voluntary basis and thereby take the sole responsibility for any consequences arising from such participation.

Strong winds usually do not mean the fastest sailing.

## 15. Expenses

---

All sailing boats and crews shall bear their own costs arising from the participation in this contest.

## 16. Announcements

---

A list of all the record attempts will be displayed in Sailing Point store and on the Internet ([www.sailing-point.si](http://www.sailing-point.si), [www.sailingrecord.com](http://www.sailingrecord.com)).

## 17. Photos

---

The organiser reserves the right to publish all the media material provided by participants.

## 18. Contacts

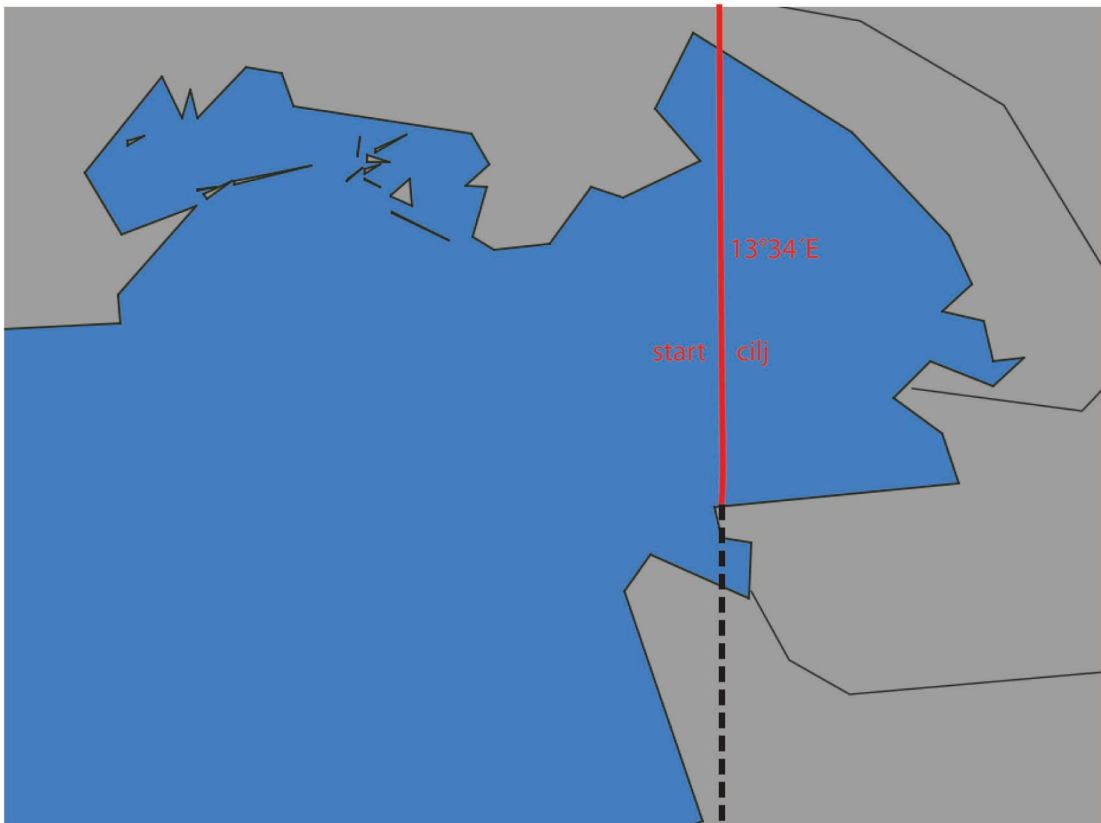
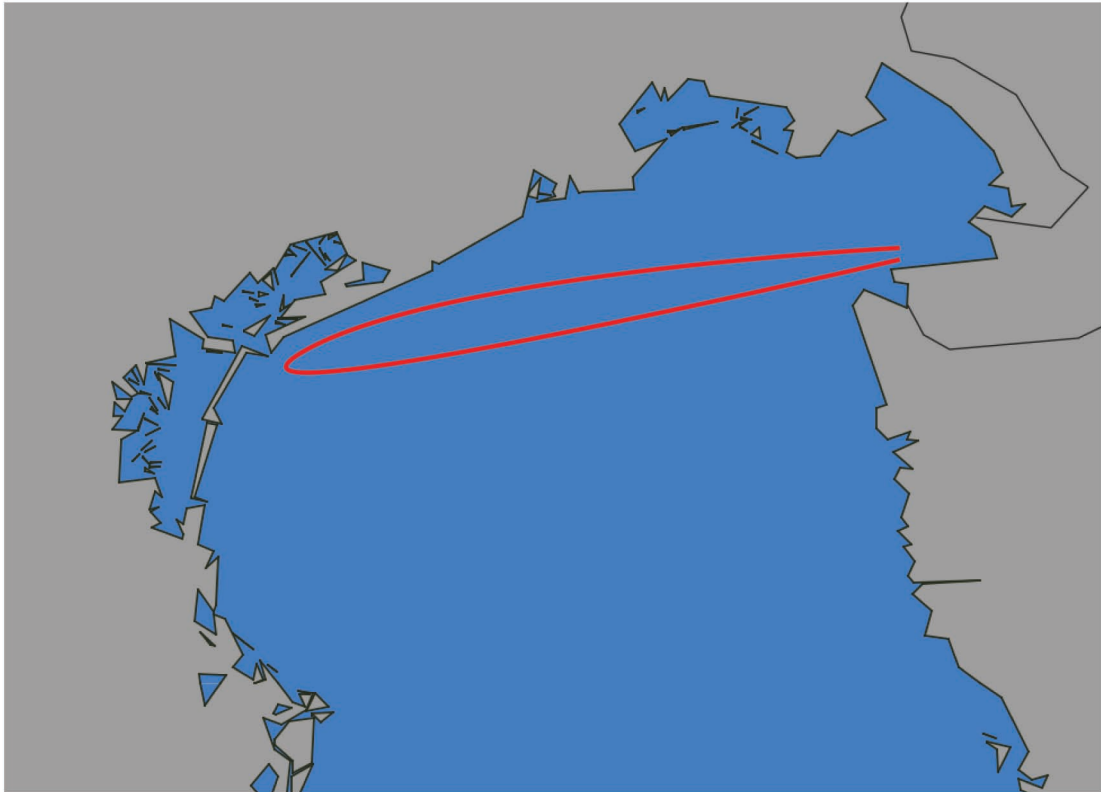
---

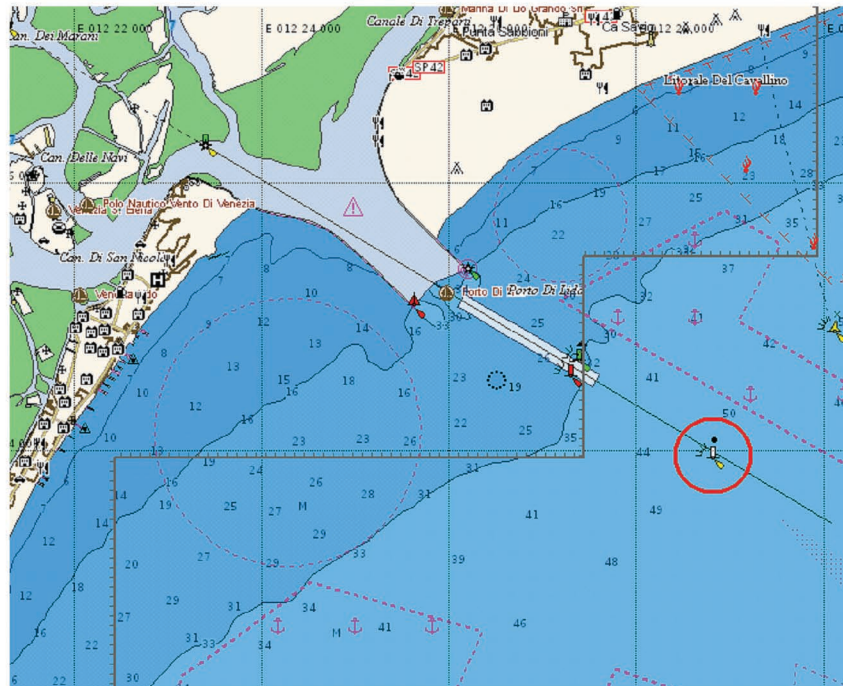
Tomaž Čopi  
Cell-phone: +386 41 418 884  
Email: [tomazcopi@gmail.com](mailto:tomazcopi@gmail.com)

Aljaž Jadek  
Cell-Phone: +386 41 863 061  
Email: [jadek\\_aljaz@yahoo.com](mailto:jadek_aljaz@yahoo.com)

Andraž Mihelin:  
Cell-phone: +386 41 510 007  
Email: [andraz@seascape18.com](mailto:andraz@seascape18.com)







**Before sailing****Boat name****Boat type and length****Skipper****Cell-phone #1****Cell-phone#2****Time and date the start is announced****Appointed starting time <sup>1</sup>****Crew members****During sailing**

	Time:	Comments:
Actual start	<sup>2</sup>	
Lighthouse rounding		
Finish		
Sailing time		

	Time:	Coordinate:	Comments:
Start			
+2h			
+4h			
+6h			
+8h			
+10h			
+12h			
+14h			
+16h			
+18h			
+20h			
+22h			
+24h			
+26h			

<sup>1</sup> At least 24 hours after start announcement<sup>2</sup> In 24 hour starting window after appointed start